

Hazard

“a source of potential harm to a community, including the population, environment, private and public property and infrastructure, and businesses.”

Four Hazard Categories

- Natural
- Technological
- Biological / Health Related, and
- Civil / Political

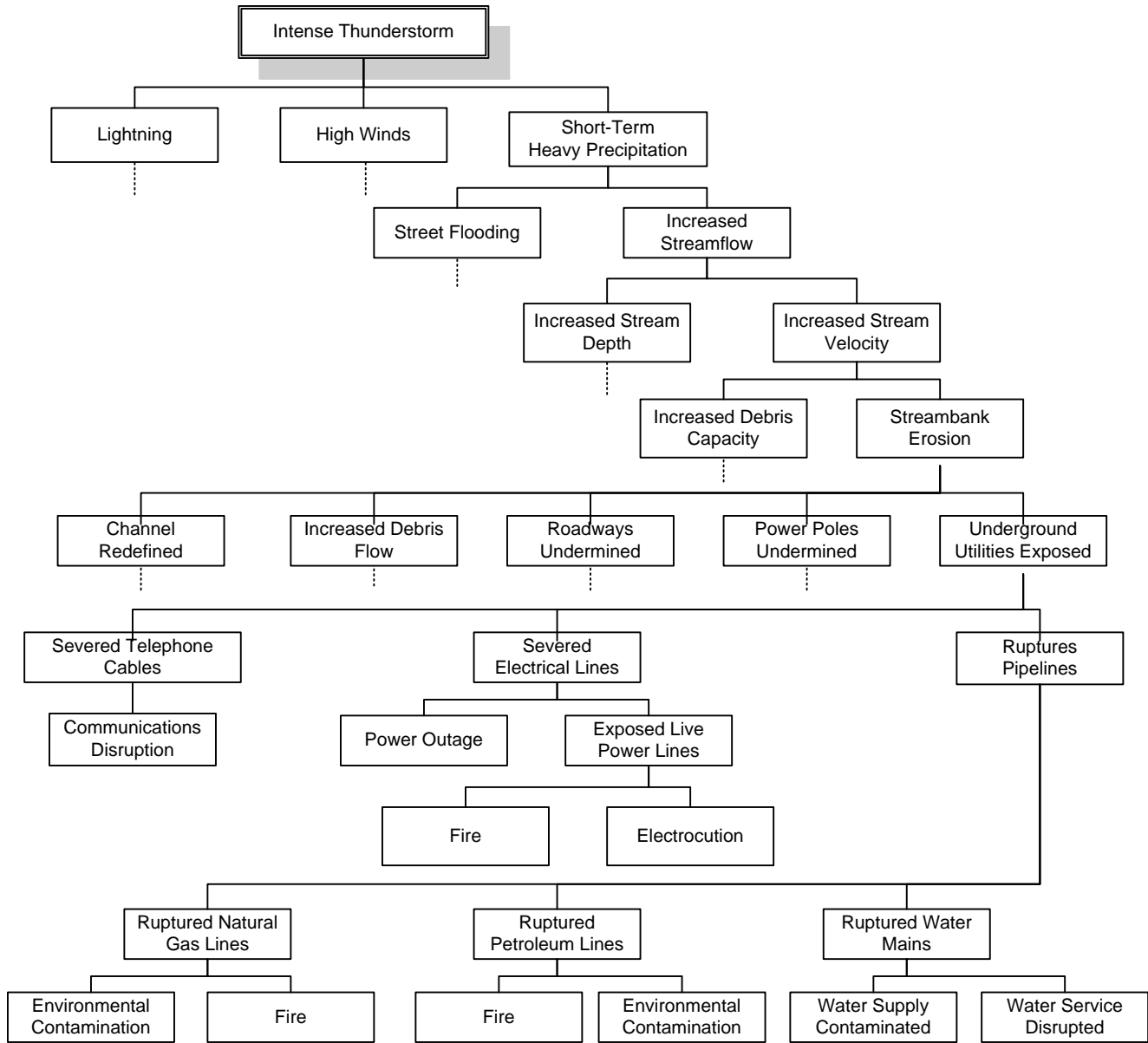
Hazard Identification Methods

- Brainstorm
- Research the disaster and emergency history of the community
- Review Existing Plans
- Investigate similar hazard identification efforts in neighboring communities
- Use maps to overlay known community and environmental characteristics
- Interview key personnel

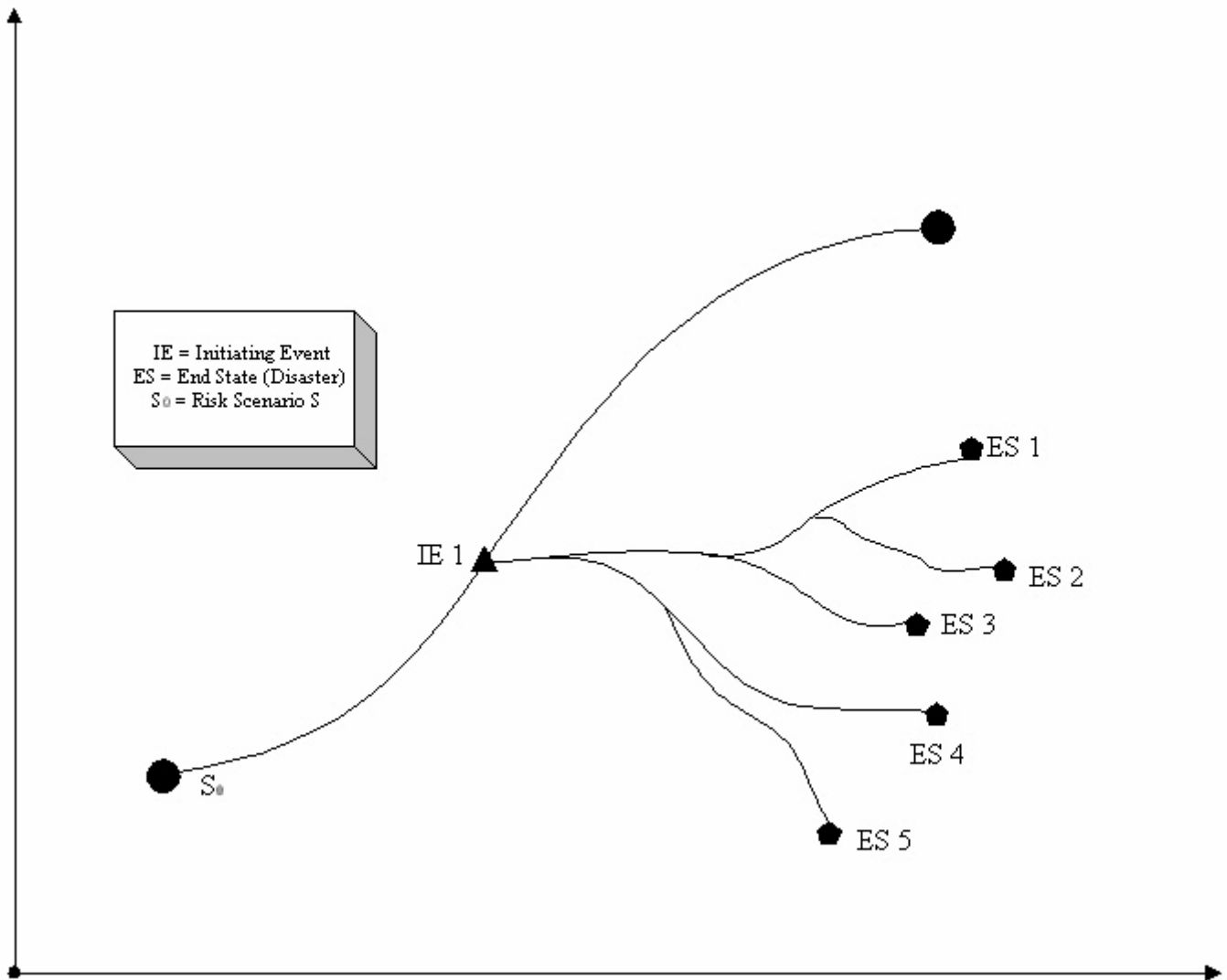
Hazard Identification Methods 2

- Perform site visits to public or private facilities
- Utilize industry experts
- Talk to the State Hazard Mitigation Officer (SHMO)
- Use hazard maps and other information resources created by the various federal agencies
- Determine secondary hazards
- Use checklists

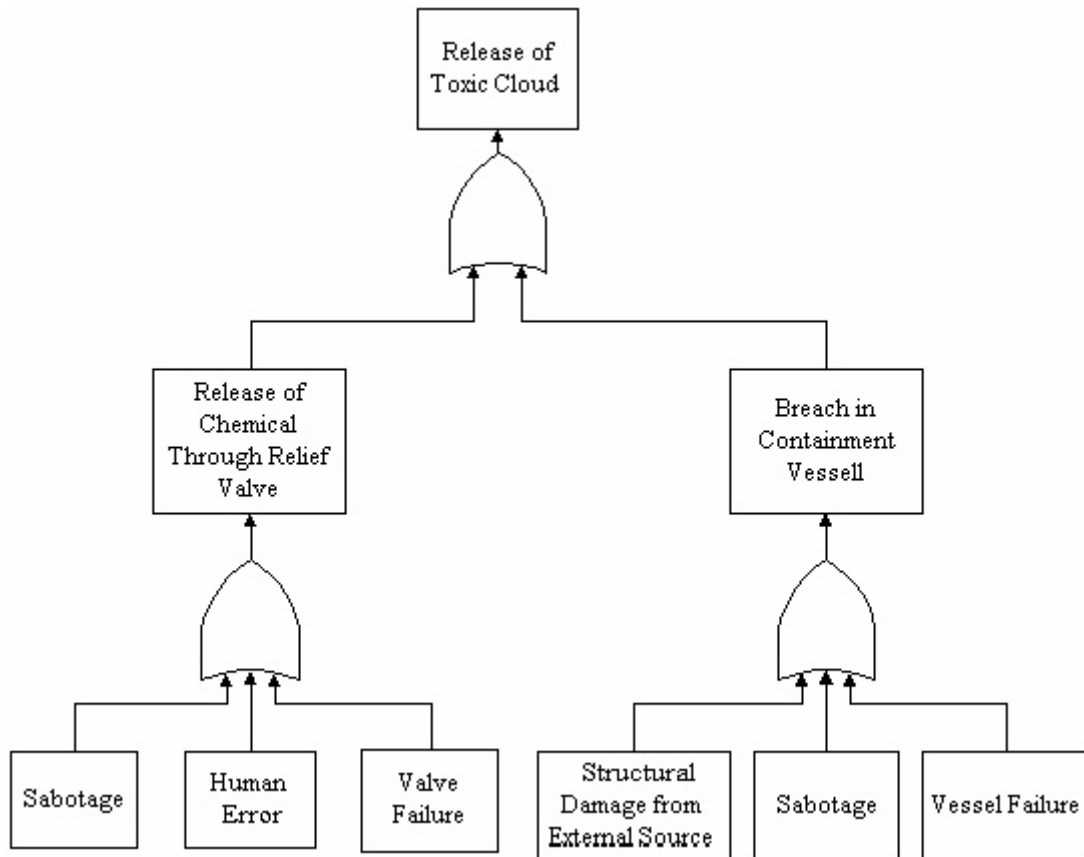
Event Tree 1



Event Tree 2



Fault Tree 1



Fault Tree 2

